



The extra support you need – on your terms

AccordantCare™ for complex conditions is included in your benefit plan at no extra cost to you.

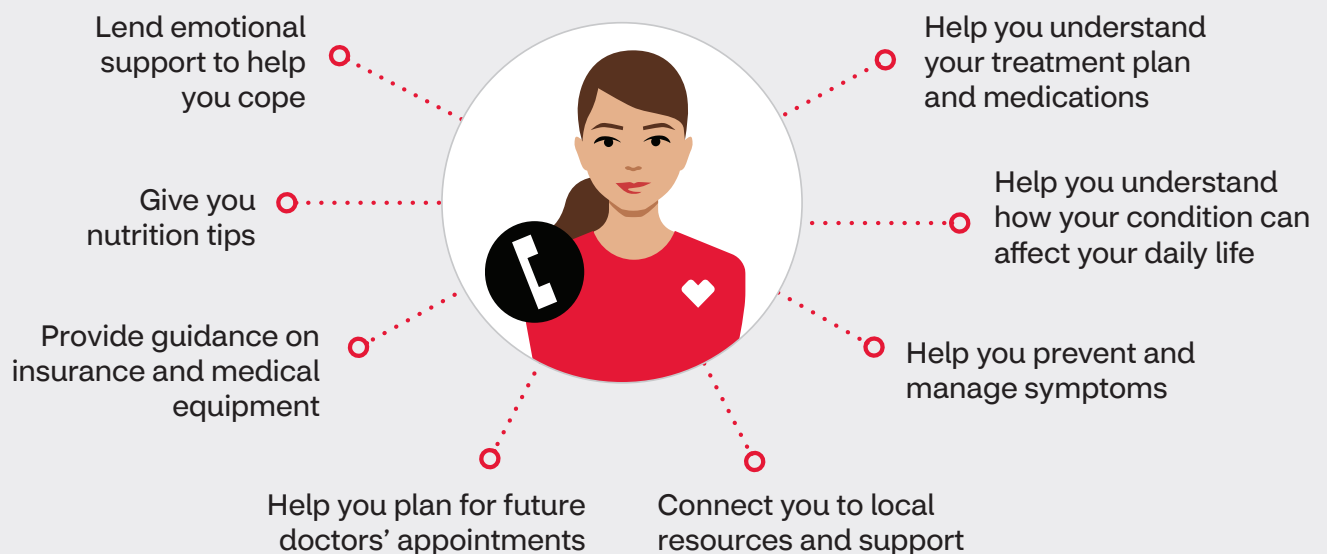
Dedicated, specially trained nurses

You'll have a care team available by phone and online whenever you need them. Our total approach helps you stay as healthy as possible to live your best life.

A helping hand when you need it

You can use the program as much or as little as you like. There's never any pressure. Our specially trained on-call nurses are available for you 24/7.

We're here for you — on your terms.



24/7 support for these complex conditions:

- Amyotrophic Lateral Sclerosis (ALS)
- CIDP (Chronic Inflammatory Demyelinating Polyradiculoneuropathy)
- CKD (Chronic Kidney Disease)
- Crohn's Disease
- Cystic Fibrosis
- Dermatomyositis
- Epilepsy (Seizures)
- Gaucher Disease
- Hemophilia
- Hereditary Angioedema
- Human Immunodeficiency Virus (HIV)
- Inclusion Body Myositis (IBM)
- Juvenile Idiopathic Arthritis (JIA)
- Multiple Sclerosis
- Myasthenia Gravis
- Parkinson's Disease
- Polymyositis
- Pulmonary Arterial Hypertension (PAH)
- Rheumatoid Arthritis
- Scleroderma
- Sickle Cell Disease
- Systemic Lupus Erythematosus (SLE or Lupus)
- Ulcerative Colitis

**Ready to get
started?**



Call today with questions or to enroll:
844-948-0855 (TTY: 800-735-2962)
Monday – Friday, 8AM – 9PM ET
Accordant.com

Accordant Health Services, LLC, is a CVS Caremark® company. All rights reserved. Accordant Health Services, LLC is a wholly owned subsidiary of CVS Caremark. Additional financial information is available upon request. Our program, care team and care managers do not provide diagnostic services or direct treatment. We assist you in getting the care you need and our program is not a substitute for the medical diagnosis, treatment and/or instructions provided by your health care providers. Our employees are trained regarding the appropriate way to handle your private health information.

©2022 Accordant. All rights reserved. 26-52076Ac 071620